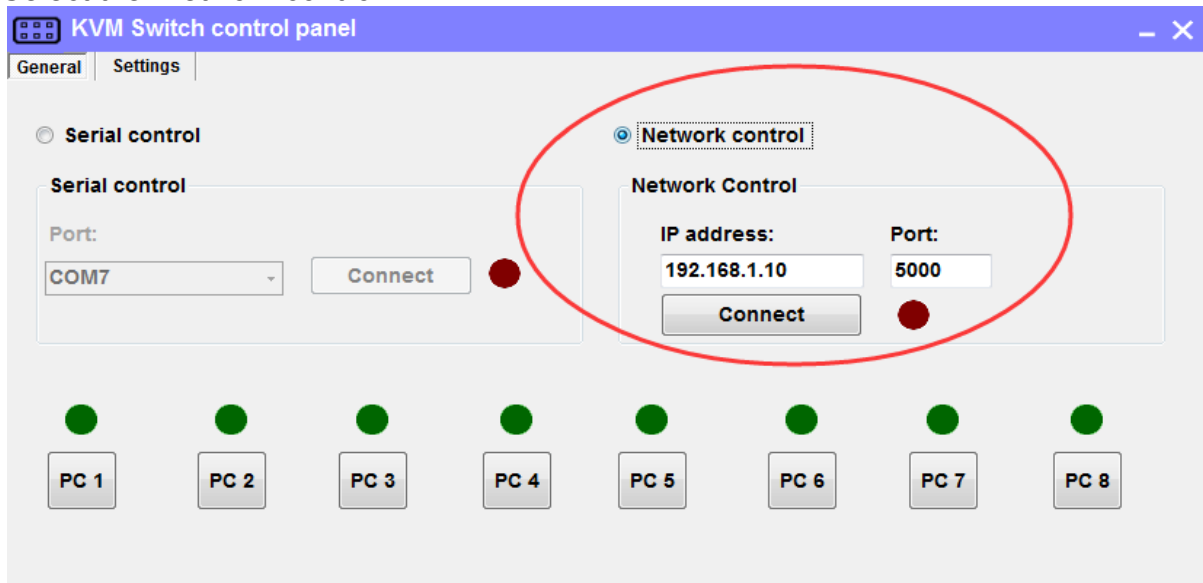
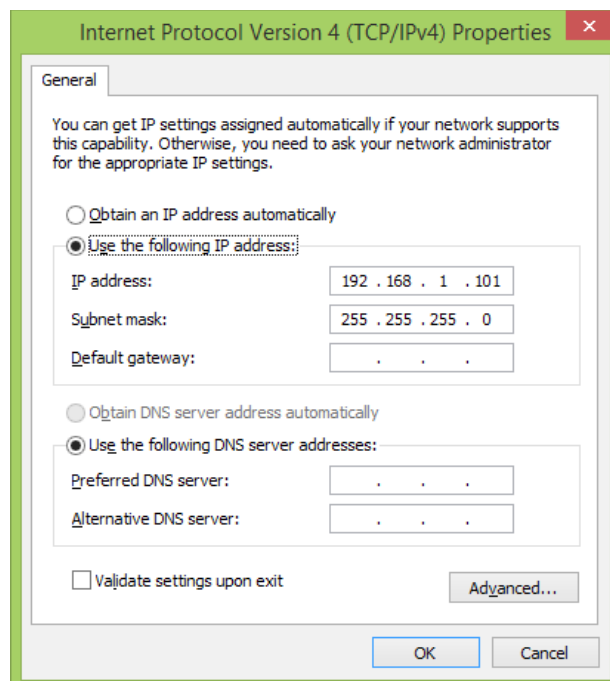


How to change the KVM's IP address?

1. Connect the PC and KVM switch with UTP cable. Power on KVM switch. Double click 'KVM Switch control panel.exe' to run control software on the PC.
2. Select the 'Network control'.

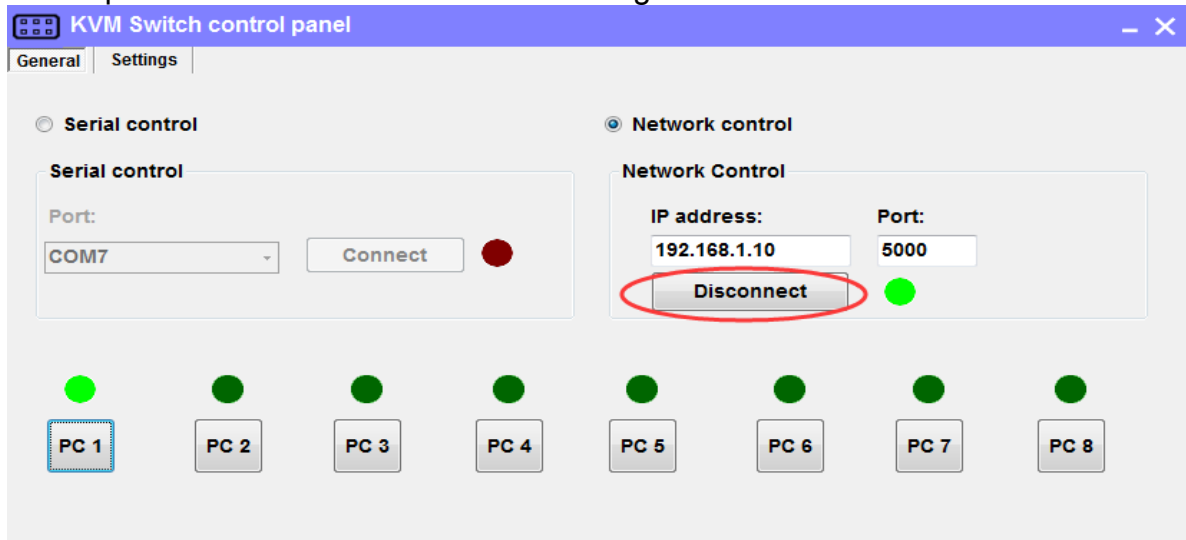


- 1). Connect the control PC's ether net port and KVM network control port with UTP cable or make sure both are connected to the same router.
- 2). Setup IP address of the network adapter on the PC which running this software, make sure the IP address is between 192.168.1.2~192.168.1.254 but should not be 192.168.1.10. Please take the below setup picture for example.

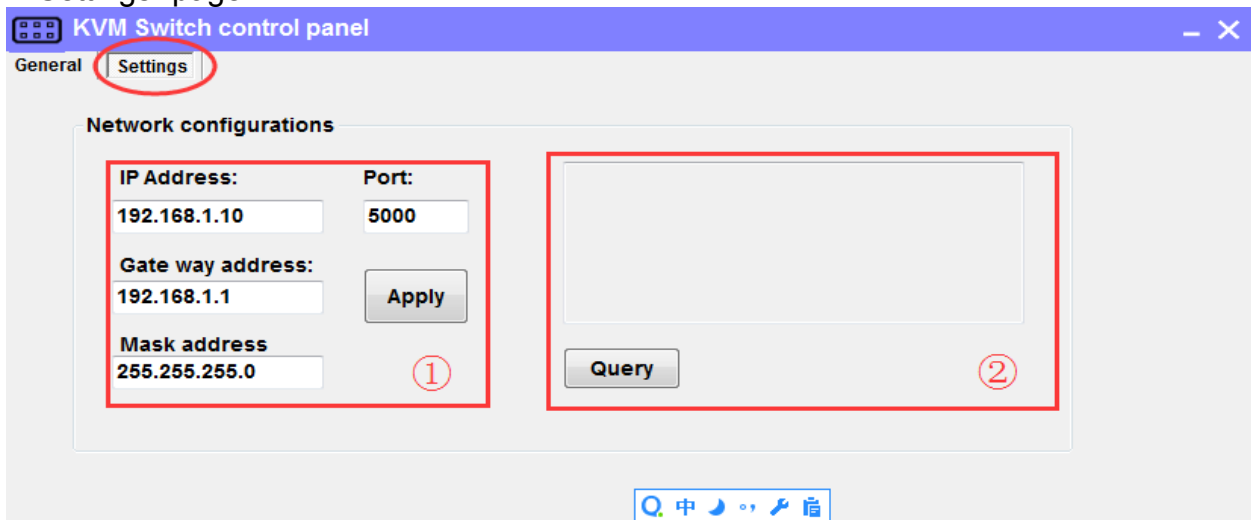


- 3). Click button 'Connect' in network control section, the button will be changed to 'Connecting...', please wait for seconds, if succeed, the red indicator beside the button will change to green. If failed, please check if the UTP cable is connected to the PC, the

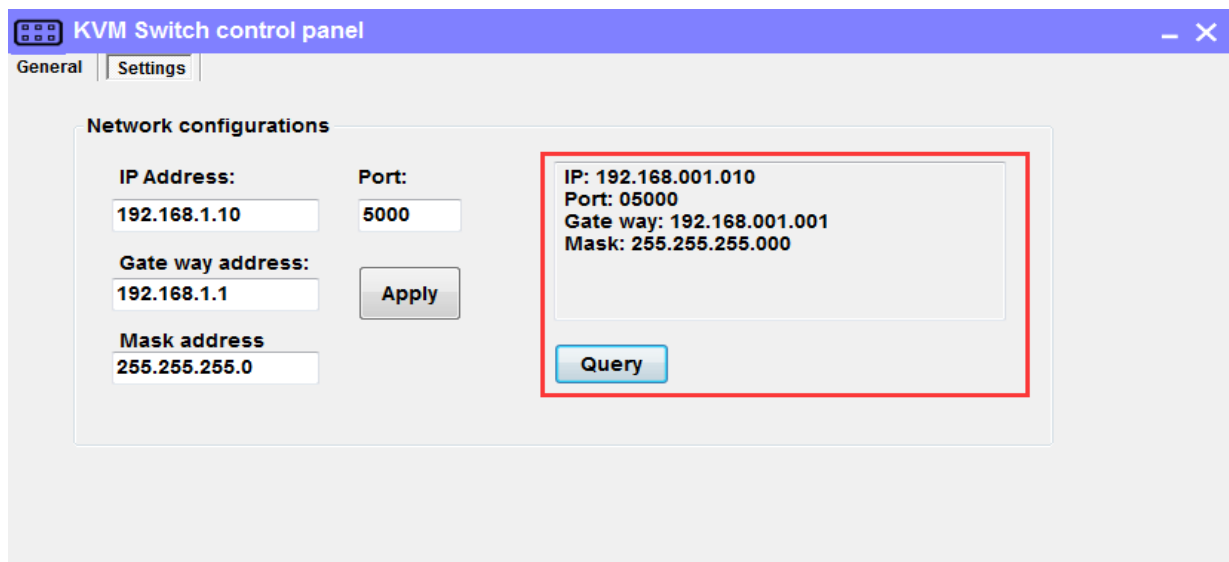
KVM is powered on and the IP address setting of the PC is correct.



4). If the network connection is successfully established in step 3), then select the "Settings" page.



Press button "Query", you should see the current IP settings in Zone ②. If the control panel failed to display current IP information, please check the network connection is successfully established in step 3).



Modify the IP settings as you want in zone ①, then press button "Apply", if succeed, you will see the modified IP settings in zone ②. Turn off matrix and on again, and wait about 2 seconds, then you should be able to connect the matrix with new IP address via "Network control".

***Note: Please do remember the modified IP settings, otherwise you couldn't connect to the KVM if you forgot the IP address. (This KVM firmware version does not support IP configuration via RS232)**